

STAGE 6

Tallowwood Release

THYME

LIFESTYLE RESORT

ROTHWELL

Welcome

Thyme Rothwell is a boutique over-50s lifestyle resort crafted to let you live carefree.

Set in the idyllic Redcliffe Peninsula and with easy access to local amenities, the 192 homes of Thyme Rothwell offer the best of everything. Here, life moves at your pace, whether that's exploring the nearby coast, joining a group walk at sunrise, relaxing with friends during happy hour or enjoying a leisurely swim in the pool.

Our low-maintenance homes give you more time to do what you love. With the freedom to travel, explore or simply relax, you can do so knowing that your home is built for easy living.

You'll find genuine neighbours, pet-friendly living and a welcoming atmosphere that makes it easy to feel like you belong.

STAGE 6 Tallowwood Release



Artist impression. Future Community and Stage Release Maps not to scale and to be used for illustrative purposes only. Subject to change without notice.



Community Masterplan & Future Facilities.



Our Homes

Every home at Thyme Rothwell is built with comfort, quality and energy efficiency in mind. Interiors are light-filled with high ceilings, quality flooring and a choice of modern colour schemes.*

*Subject to availability and timing of home site selection



INCLUSIONS YOU'LL LOVE

- ✓ Quality European appliances
- ✓ Engineered stone benchtops
- ✓ Tiled splashbacks
- ✓ Soft-close drawers throughout
- ✓ Floor-to-ceiling tiling in bathrooms
- ✓ USB charging points
(where applicable)
- ✓ Remote garage door and tiled alfresco
- ✓ Ceiling fans, 5kW solar system* and split system air-conditioning

*Subject to relevant authority approvals.

CLUBHOUSE LOUNGE



Artist Impression

Life feels better when it's shared.

At Thyme Rothwell, the real magic is in the everyday. It's morning coffees on the future Clubhouse deck, afternoons spent crafting or gardening, and evenings where laughter fills the air and friendships come easy.

The homeowner-led social committee bring ideas to life. Lasting connections are formed with every new event planned and interest group established. Your budding activities calendar will quickly become filled with something new happening every day.

Whether you're joining a walking group, hosting friends for dinner or simply chatting with neighbours at the mailbox, you'll find that good company is never far away.

CLUBHOUSE ENTRY



Artist Impression

SWIMMING POOL



Artist Impression

BOWLING GREEN



Artist Impression



Artist Impression

2

1

2

2

FLOORSPACE

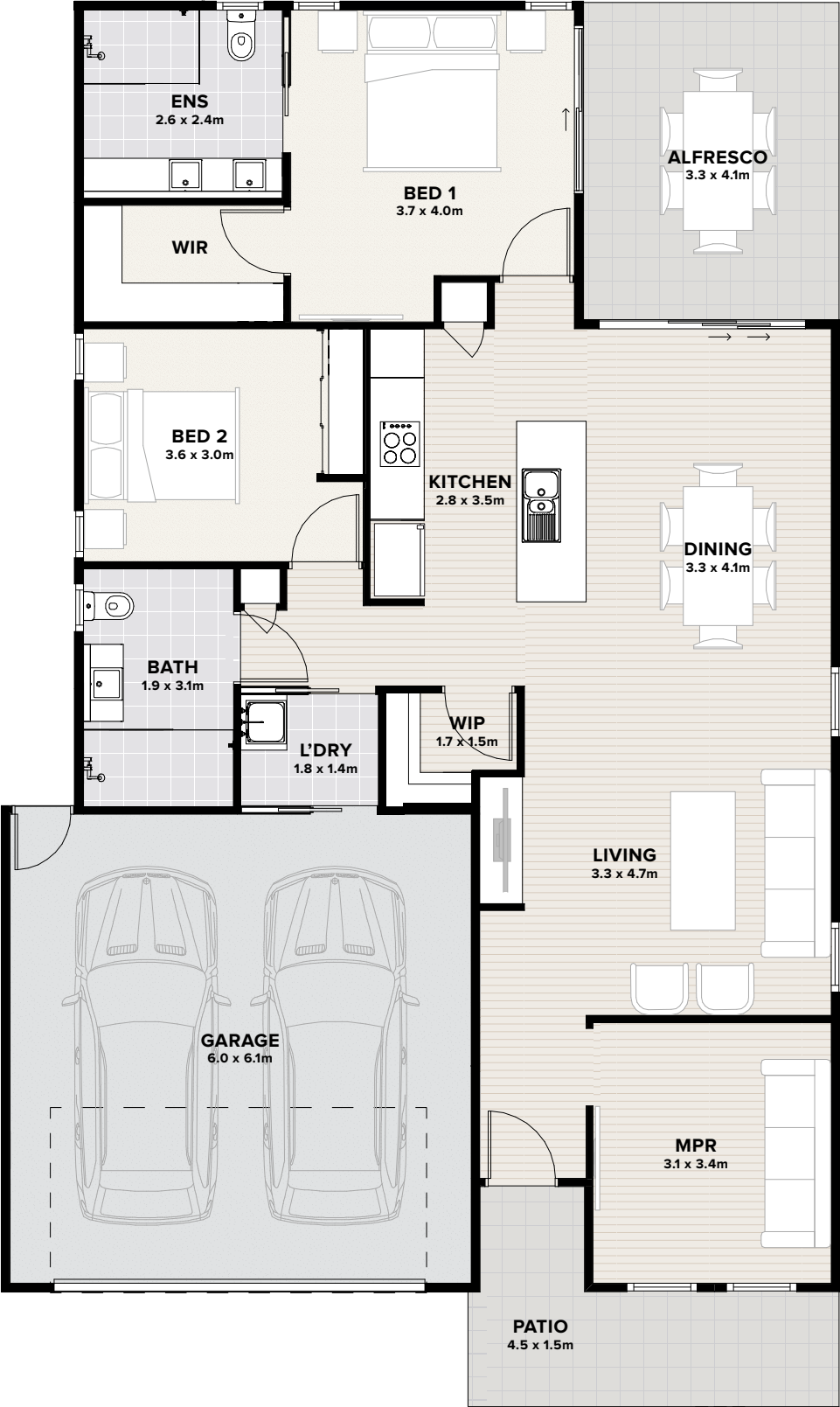
Area based on external wall footprint

Living Area	117.7m ²
Alfresco & Porch	22.8m ²
Garage	37.9m ²
Total	178.4m ²

The Azure is a beautifully appointed home designed for ease and comfort, with two spacious bedrooms including a generous master retreat with walk-in robe and private ensuite. A flexible Multi-Purpose Room offers space for a study, third bedroom or creative studio.

Light-filled open-plan living flows to a private alfresco, perfect for relaxing or entertaining. The designer kitchen features a premium appliance suite, walk-in pantry, and oversized island bench.

A double garage with internal access, dedicated laundry, and a low-maintenance, single-level layout make the Azure a seamless blend of functionality and style.



Artist impression. Not to scale and subject to change and approvals.



Stradbroke

CONTEMPORARY COASTAL

2

1

2

2

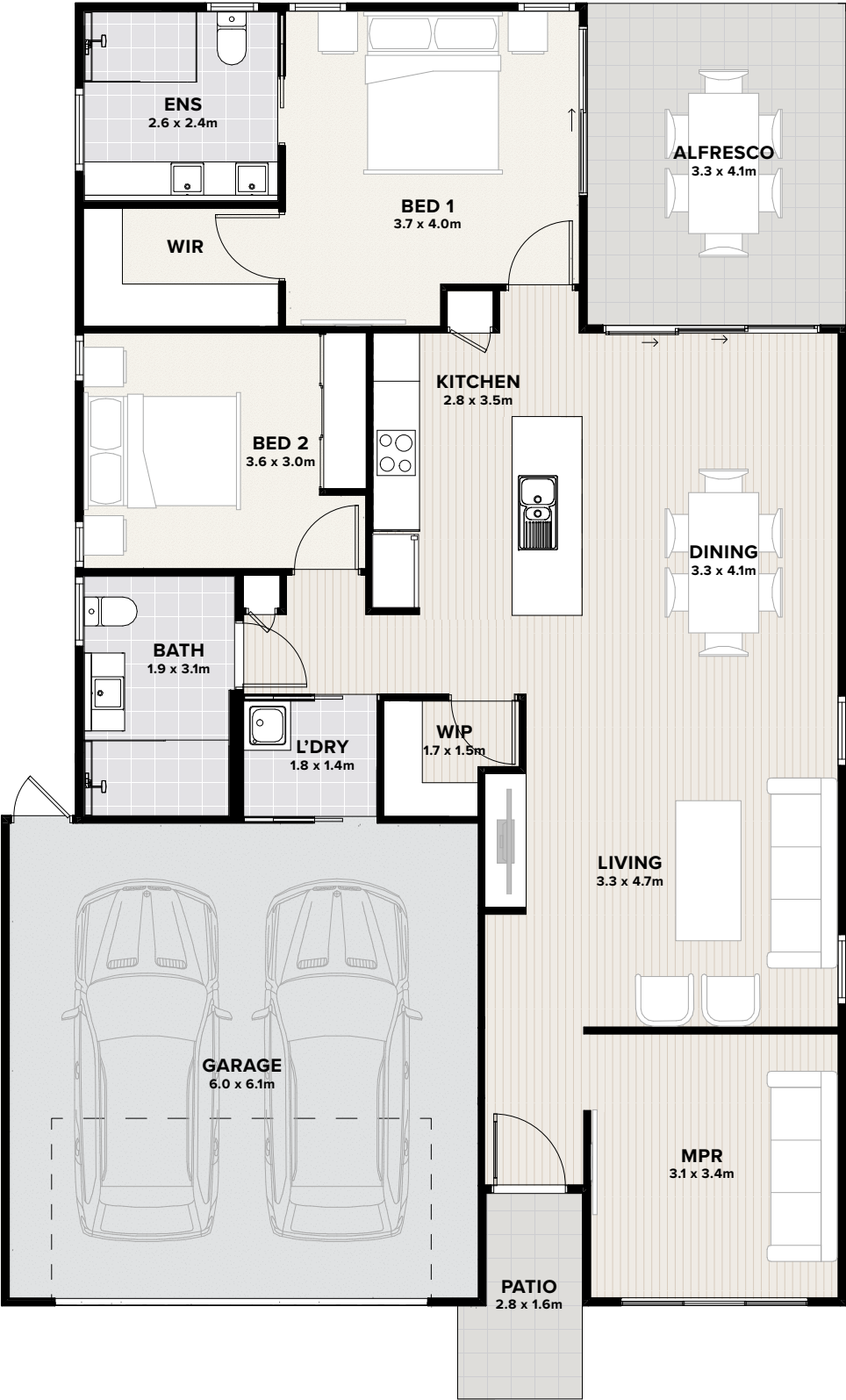
FLOORSPACE

Area based on external wall footprint

Living Area	117.7m ²
Alfresco & Porch	18.1m ²
Garage	37.9m ²
Total	173.7m ²

The Stradbroke embraces coastal charm, with its endearing dutch gable roofline, giving the home a welcoming sense of character. Inside, the layout includes two spacious bedrooms, a generous master suite with walk-in robe and ensuite, and a versatile Multi-Purpose Room for hobbies or guests.

The open-plan living, dining and kitchen area connects effortlessly to the covered alfresco. The kitchen offers quality appliances, a walk-in pantry and central island bench. With internal access from the double garage and a layout made for a lock-up-and-leave lifestyle, Stradbroke is contemporary living made simple.





Artist impression. Not to scale and subject to change and approvals.


Voyager


SPACIOUS & TRAVEL-READY



 3

 2

 1

 1

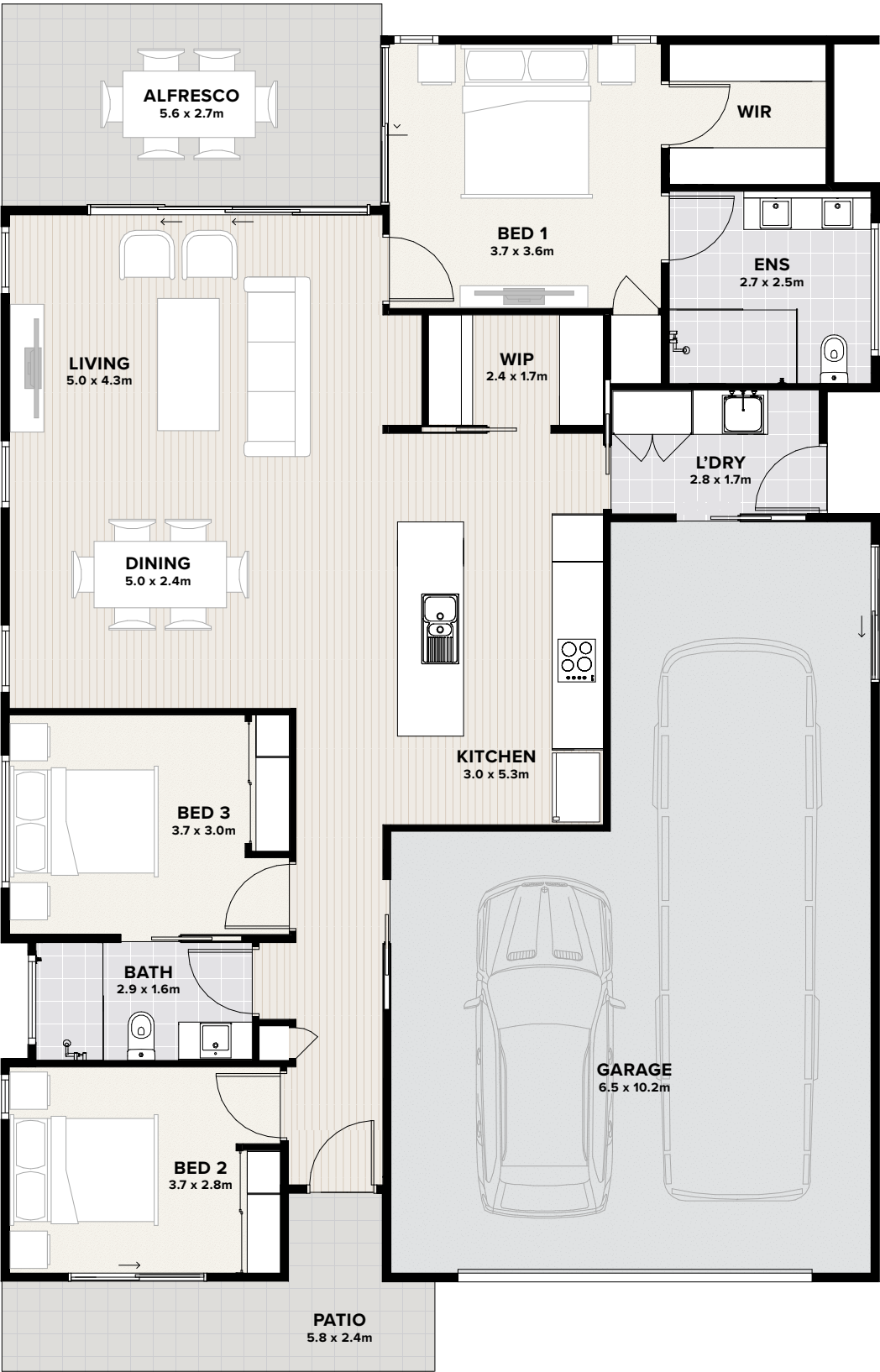
FLOORSPACE

Area based on external wall footprint

Living Area	128.5m ²
Alfresco & Porch	24.3m ²
Garage	55.9m ²
Total	208.7m ²

The Voyager is a generous three-bedroom home designed for those who value space, flexibility and the freedom to travel. It features a master suite with walk-in robe and ensuite and two additional bedrooms. The heart of the home is a large open-plan kitchen, living and dining area that flows to a covered alfresco.

The designer kitchen includes a walk-in pantry and large island bench, while a walk-through laundry links directly to the kitchen from the garage. A key feature is the RV-height double garage, ideal for storing a caravan, motorhome or boat, making Voyager the perfect base for an adventurous lifestyle.





Artist Impression

 2

 1

 2

 1

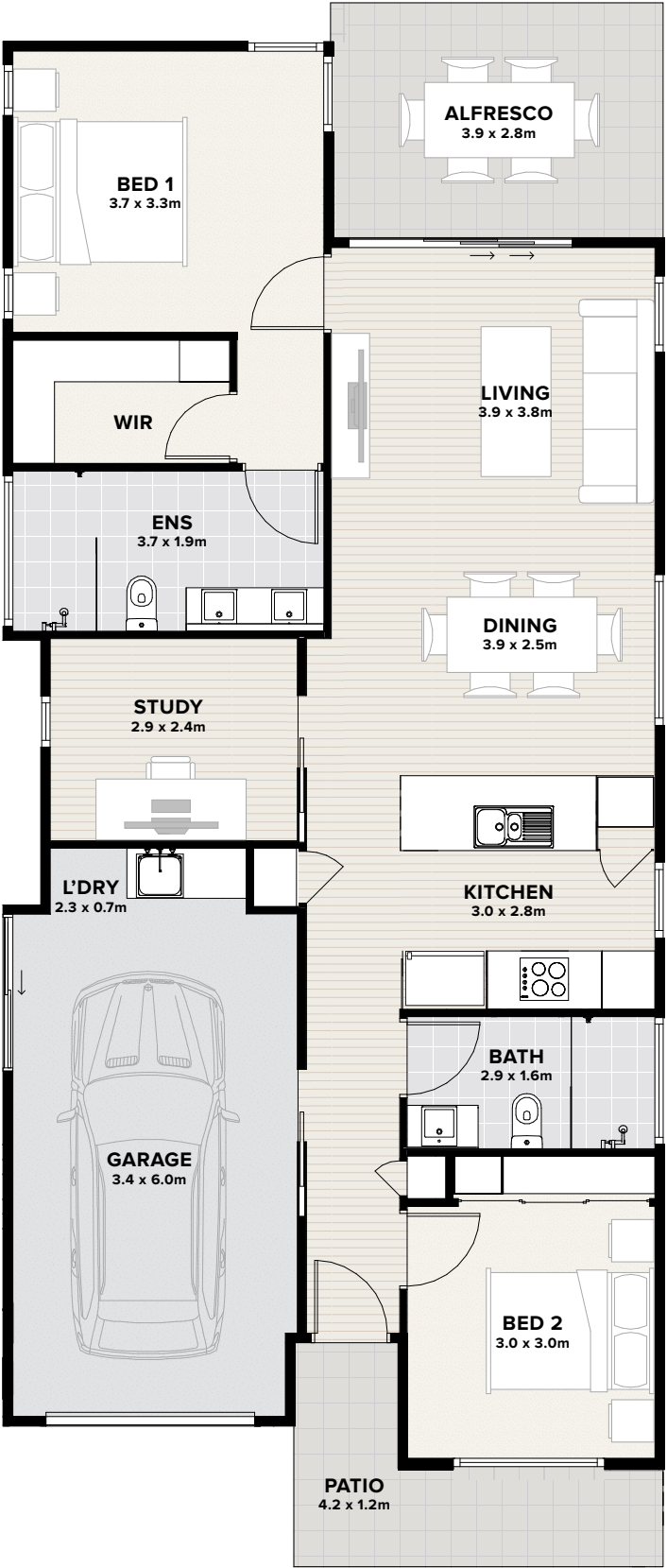
FLOORSPACE

Area based on external wall footprint

Alfresco	11.12m ²
Garage	23.51m ²
House Area	96.87m ²
Porch	7.21m ²
Total	138.71m ²

Pearl delivers comfort and charm in a smart, compact design ideal for singles, couples or downsizers. It features two spacious bedrooms, including a master with ensuite and walk-in robe, plus a handy study nook perfect for reading or working from home.

An open-plan kitchen, living and dining zone extends to a covered alfresco for seamless indoor-outdoor living. The home's gabled façade and timber front door add strong street appeal, while the single garage with internal access and low-maintenance landscaping complete this stylish, functional home.



Artist impression. Not to scale and subject to change and approvals.



2

1

2.5

2

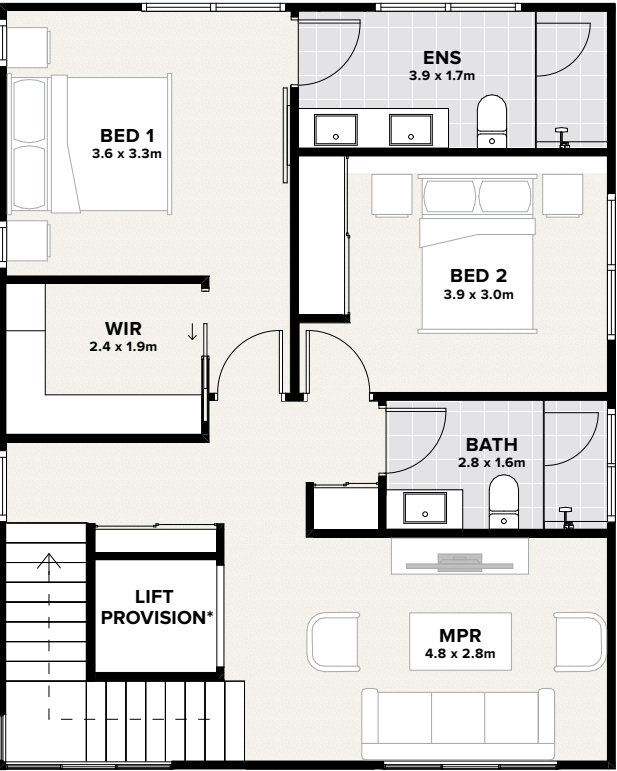
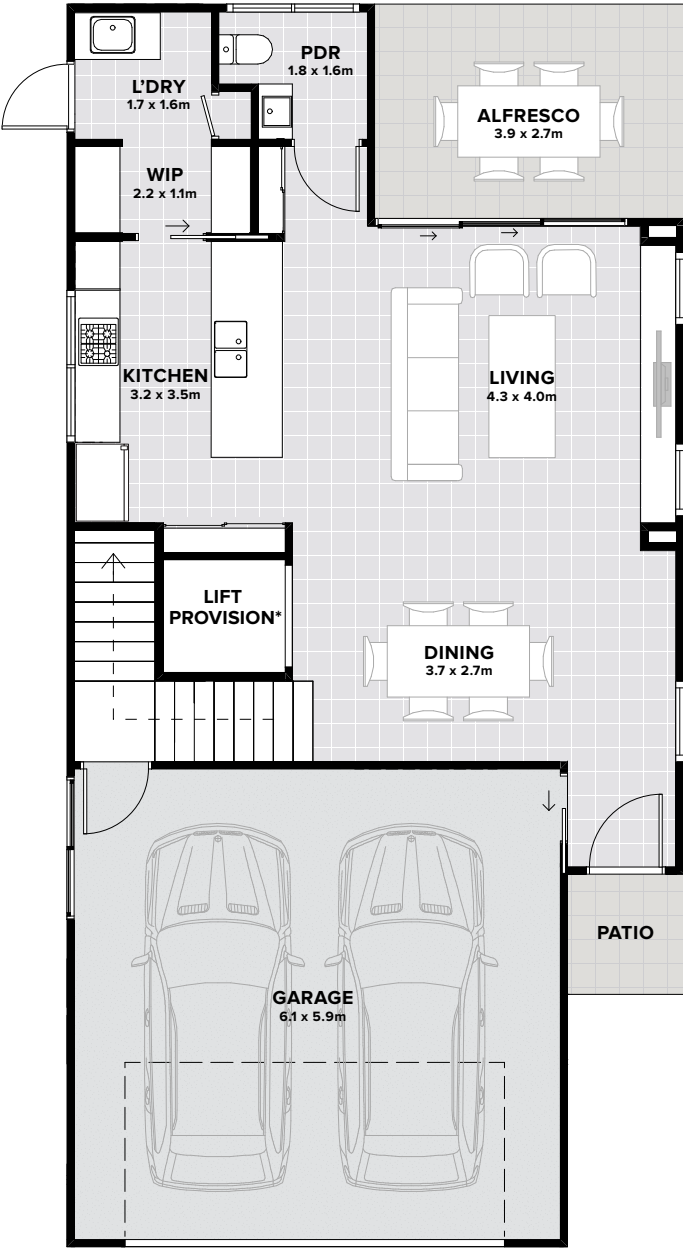
FLOORSPACE

Area based on external wall footprint

Alfresco	10.60m ²
Garage	38.13m ²
Ground Floor	58.88m ²
First Floor	67.40m ²
Porch	2.23m ²
Total	177.24m ²

The Anchorage is a contemporary double-storey home thoughtfully designed for flexible, modern living. The spacious master bedroom features a generous walk-in robe and a stylish ensuite with double vanity, while a second bedroom and bathroom provide comfort for guests or family.

The open-plan living area seamlessly connects the kitchen, dining and living spaces, flowing out to an expansive rear alfresco, perfect for entertaining year-round. A large multi-purpose room adds versatility on the first floor, while the ground floor is complemented by an internal laundry and a secure two-car garage. With ample storage throughout, this home is perfect for those looking for a smart, lifestyle-focused design.



Standard Inclusions

EXTERNAL DESIGN

- External colour schemes are predetermined by project architect

INTERNAL DESIGN

- Choose from 3 internal colour schemes available:*
- Haven
- Dune
- Cove

*Subject to building progress status.

EXTERIOR

- Architecturally designed energy efficient home
- Colorbond roof, gutters and fascia
- Slab on ground with termite controls
- Painted light weight cladding
- Feature house numbering
- Foldable clothesline
- Powder coated aluminium frame windows
- Insect screens to windows
- Insulated homes
- Colorbond fence with secure gate
- Front and rear garden hose tap
- Architecturally designed pergolas (where applicable)

INTERNAL LIVING AREAS

- 2700mm ceiling typical height
- Linen/storage cupboards
- Vinyl plank flooring to living space
- Recessed LED lights throughout, dimmable to living areas
- Painted skirting and architraves

KITCHEN

- Quality stainless steel appliances:
 - Electric oven
 - Electric cooktop
 - Dishwasher
 - Rangehood
- Plumbing connection to the fridge
- Undermount double bowl kitchen sink
- Large pantry cupboards (walk-in pantry where applicable)
- Laminate cabinetry styled to selected internal colour scheme
- Feature tile splash back
- Engineered stone benchtops
- Vinyl plank flooring to kitchen/living/dining
- Soft close drawers and cupboards

BEDROOMS

- Quality carpet as per selected internal colour scheme
- Walk-in wardrobe to bed 1 (where applicable) with shelving, drawers and hanging rods
- Built-in wardrobe with shelving, drawers and hanging rods
- Ceiling fans to all bedrooms
- TV point to master bedroom

BATHROOM/ENSUITE

- Custom vanity with stone benchtop including basin with chrome pop-up waste
- Semi-frameless shower screens (where applicable)
- Ceramic wall tiles (floor to ceiling) styled to selected internal colour scheme
- Ceramic floor tiles styled to selected internal colour scheme
- Quality designed towel rail, shower shelf and toilet roll holder
- Integrated heat/light/exhaust fan
- Mirrored vanity cabinets in both bathrooms

LAUNDRY

- Engineered stone benchtops
- Cabinet with stainless steel drop-in laundry tub with sink mixer tap
- Floor tiles and tiled splashback
- Drainage for washing machine and outlet hose
- Direct access to external drying area
- Noggins for dryer

ALFRESCO

- Sliding doors and insect screen to alfresco
- Floor tiles
- Ceiling fan
- LED recessed downlights
- Weatherproof power outlet

DOORS & HARDWARE

- Quality designed front door
- Lemaar set chrome handles to interior doors

GARAGE/DRIVEWAY

- Standard garage door height 2100mm
RV garage door height 3600mm
- Remote control panel lift garage door
- Epoxy garage floor
- Exposed aggregate driveway
- Direct internal access to home

TECHNOLOGY/SERVICES

- Split system air-conditioning to master bedroom and living area
- TV and data points
- USB charge points (where applicable)
- Ceiling fans to living areas, bedrooms and dining room
- Exhaust fan/light/heater to bathrooms
- Hardwired interconnected smoke detection with battery back-up
- Electricity and water services individually metered and connected
- High speed internet ready
- 5kW solar system*

*Subject to approval of relevant authorities.

Optional Upgrades

KITCHEN FITTINGS & FIXTURES UPGRADES

- Kitchen joinery upgrade to D-shaped cabinet handles in brass metal (also applied to pantry, storage and linen closets)
- Kitchen mixer tap upgraded to gooseneck style in brushed brass

KITCHEN & LAUNDRY STONE UPGRADE

- Kitchen and laundry benchtop upgraded to de-silicated Lithostone Carrara Lumina stone

KITCHEN ISLAND BAR BACK UPGRADE

- Kitchen island bar back panelling upgraded to Laminex Demi-round 40mm wall panel (finished in Dulux Vivid White)

KITCHEN PENDANT UPGRADE

- Brass pendant lights (3) installation above kitchen island

KITCHEN APPLIANCE UPGRADES

- Upgrade to premium Smeg 600mm induction cooktop
- Upgrade to premium Smeg 600mm thermoseal multi-function oven (with compact screen)
- Upgrade to premium Smeg integrated dishwasher
- Upgrade to premium Smeg built-in microwave

BATHROOM & ENSUITE STONE UPGRADE

- Bathroom and ensuite vanity tops upgraded to de-silicated Lithostone Carrara Lumina stone

DUCTED AIR-CONDITIONING UPGRADE

- Ducted air-conditioning installed to the living areas, bedrooms and activity rooms

FRONT DOOR UPGRADE

- Security screen added to front door

Upgrade packages are subject to availability.
Please contact your Sales Consultant for more details and pricing.

Thyme Lifestyle Resort Rothwell

Sales & Information Centre

515 Anzac Avenue, Rothwell, QLD 4022

rothwell.thyme.com.au

1300 719 843 | rothwell@thyme.com.au

Serenitas endeavours to ensure all information provided is correct as at January 2026. Whilst every effort is made to accurately represent Thyme Lifestyle Resort Rothwell these may change in the future without notice. Images are artistic impressions only and should not be regarded as representation of fact. Please contact Thyme Lifestyle Resort Rothwell for further information.