

# Stradbroke



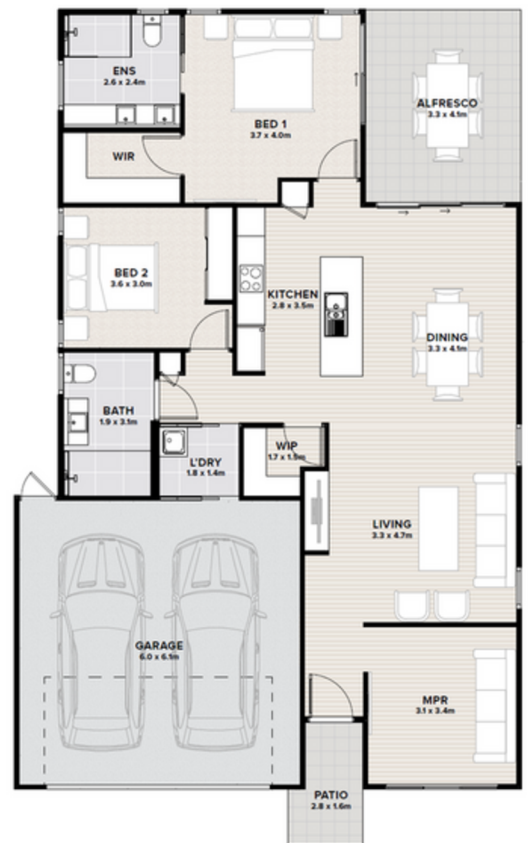
## FLOORSPACE

Area based on external wall footprint

Alfresco & Porch	18.1m <sup>2</sup>
Garage	37.9m <sup>2</sup>
House Area	117.7m <sup>2</sup>
Total	173.7m <sup>2</sup>

Thoughtfully designed to embrace coastal charm, the Stradbroke is complete with everything you need for relaxed, contemporary living.

- Charming Dutch gable roofline creating a welcoming street presence
- Spacious master suite with walk-in robe and private ensuite
- Generously sized second bedroom with excellent natural light
- Versatile Multi-Purpose Room ideal for guests or a home office
- Open-plan living, dining and kitchen with seamless connection to the alfresco and back garden
- Covered alfresco area perfect for effortless indoor-outdoor living
- Well-appointed kitchen with quality appliances, walk-in pantry and central island bench
- Double garage with internal access for everyday convenience
- Smart, low-maintenance layout ideal for a lock-up-and-leave lifestyle



Artist impression. Not to scale and subject to change and approvals.

## Thyme Lifestyle Resort Rothwell

Sales & Information Centre

515 Anzac Avenue, Rothwell, QLD 4022

[rothwell.thyme.com.au](http://rothwell.thyme.com.au)

1300 719 843 | [rothwell@thyme.com.au](mailto:rothwell@thyme.com.au)

**THYME**  
LIFESTYLE RESORT

ROTHWELL