

Pearl



Artist Impression



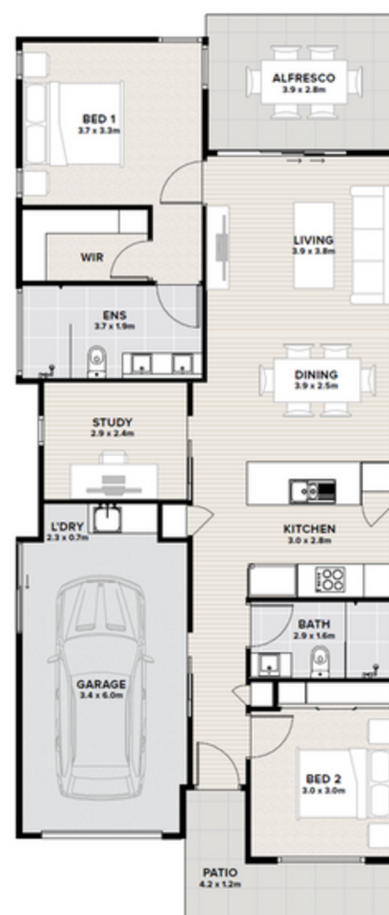
FLOORSPACE

Area based on external wall footprint

Alfresco & Porch	18.3m ²
Garage	23.5m ²
House Area	96.8m ²
Total	138.6m ²

Compact, charming and cleverly designed, the Pearl is ideal for relaxed, low-maintenance living.

- Smart two-bedroom layout ideal for singles, couples or downsizers
- Master bedroom with walk-in robe and private ensuite
- Second bedroom with excellent natural light
- Handy study nook for reading or working from home
- Open-plan kitchen, living and dining flowing to a covered alfresco
- Gabled façade and timber front door for strong street appeal
- Single garage with internal access for everyday convenience
- Low-maintenance landscaping for easy care living



Artist impression. Not to scale and subject to change and approvals.

Thyme Lifestyle Resort Rothwell

Sales & Information Centre

515 Anzac Avenue, Rothwell, QLD 4022

rothwell.thyme.com.au

1300 719 843 | rothwell@thyme.com.au

THYME
LIFESTYLE RESORT

ROTHWELL