

Azure



Artist Impression



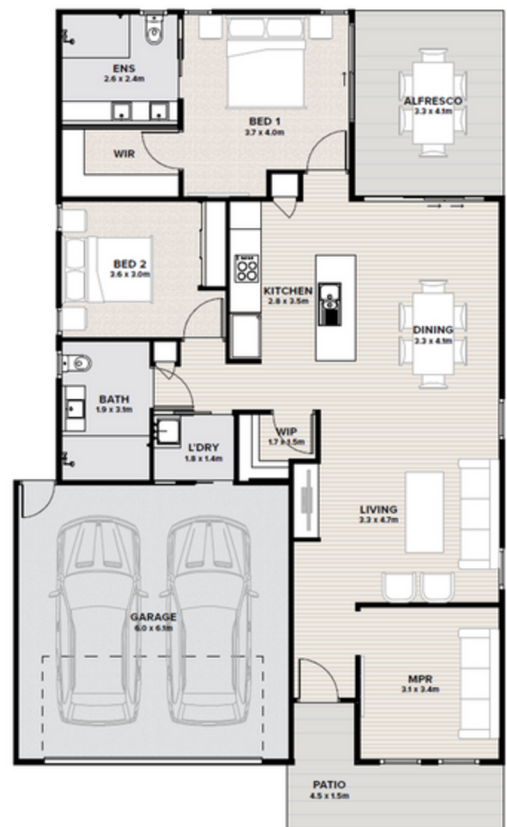
FLOORSPACE

Area based on external wall footprint

Alfresco & Porch	22.8m ²
Garage	37.9m ²
House Area	117.7m ²
Total	178.4m ²

Thoughtfully appointed and effortlessly elegant, the Azure is complete with everything you need for a life of ease.

- Spacious master retreat with walk-in robe and private ensuite
- Second generously sized bedroom with ample storage
- Flexible Multi-Purpose room ideal as a study or third bedroom
- Light-filled open-plan living and dining with seamless flow to the outdoors
- Private alfresco area perfect for relaxing or entertaining
- Designer kitchen with premium appliance suite, walk-in pantry and oversized island bench
- Double garage with internal access for everyday convenience
- Dedicated laundry for added practicality
- Low-maintenance, single-level layout designed for effortless living



Artist impression. Not to scale and subject to change and approvals.

Thyme Lifestyle Resort Rothwell

Sales & Information Centre

515 Anzac Avenue, Rothwell, QLD 4022

rothwell.thyme.com.au

1300 719 843 | rothwell@thyme.com.au

THYME
LIFESTYLE RESORT

ROTHWELL