

AZURE

VERSATILE AND
INVITING



Artist Impression

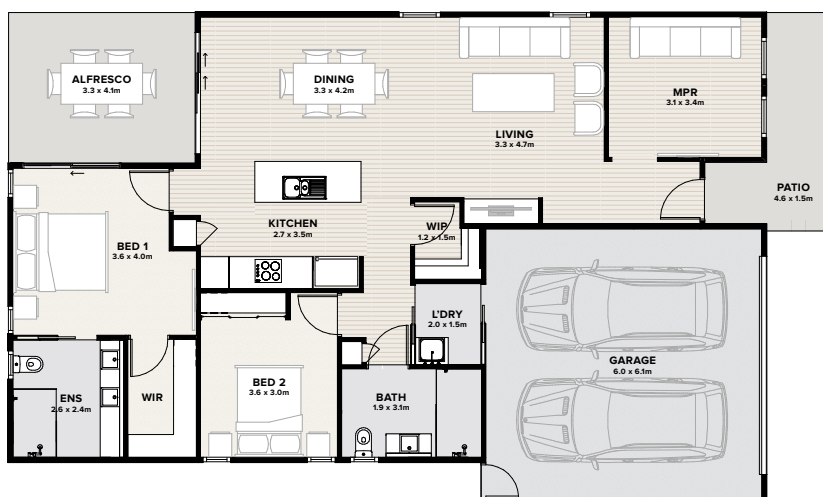
The Azure is a beautifully appointed home designed for ease and comfort, with two spacious bedrooms including a generous master retreat with walk-in robe and private ensuite. A flexible Multi-Purpose Room offers space for a study, third bedroom or creative studio.

Light-filled open-plan living flows to a private alfresco, perfect for relaxing or entertaining. The designer kitchen features a premium appliance suite, walk-in pantry, and oversized island bench. A double garage with internal access, dedicated laundry, and a low-maintenance, single-level layout make the Azure a seamless blend of functionality and style.

FLOORSPACE

Area based on external
wall footprint

Alfresco	13.75m ²
Garage	37.90m ²
House Area	117.76m ²
Porch	9.09m ²
Total	178.51m ²



Artist Impression. Not to scale and subject to change and approvals.